

Juanita McClellan



THE WESTON at OAKMONT

THE WESTON - CRAFTSMAN

3 Bedrooms • 2 Bathrooms • 2-Car Garage • 1,940 ft² Living Area • 2,875 ft² Under Roof

The Weston is a 3-bedroom, 2-bathroom retreat with 1,940 square feet designed for modern living. The open-concept layout features a spacious living room, a chef-inspired kitchen with a central island, and a cozy breakfast nook. Tray ceilings enhance the living, dining, and master suite, adding a touch of elegance. The master suite serves as a private sanctuary with a luxurious bathroom and walk-in closet. A covered lanai offers outdoor relaxation, while ICI Homes' customization options allow you to tailor every detail to your lifestyle, creating a home that's uniquely yours.

Juanita McClellan

United Real Estate Gallery - 10920

nitamcclellan@comcast.net

* Renderings may vary from actual home. Please see disclaimer for more details.

THE WESTON

3 Bedrooms • 2 Bathrooms • 2-Car Garage

Oakmont
Gainesville, FL

Available In
Oakmont 65

Living Area: 1,940 ft² **Under Roof:** 2,875 ft²

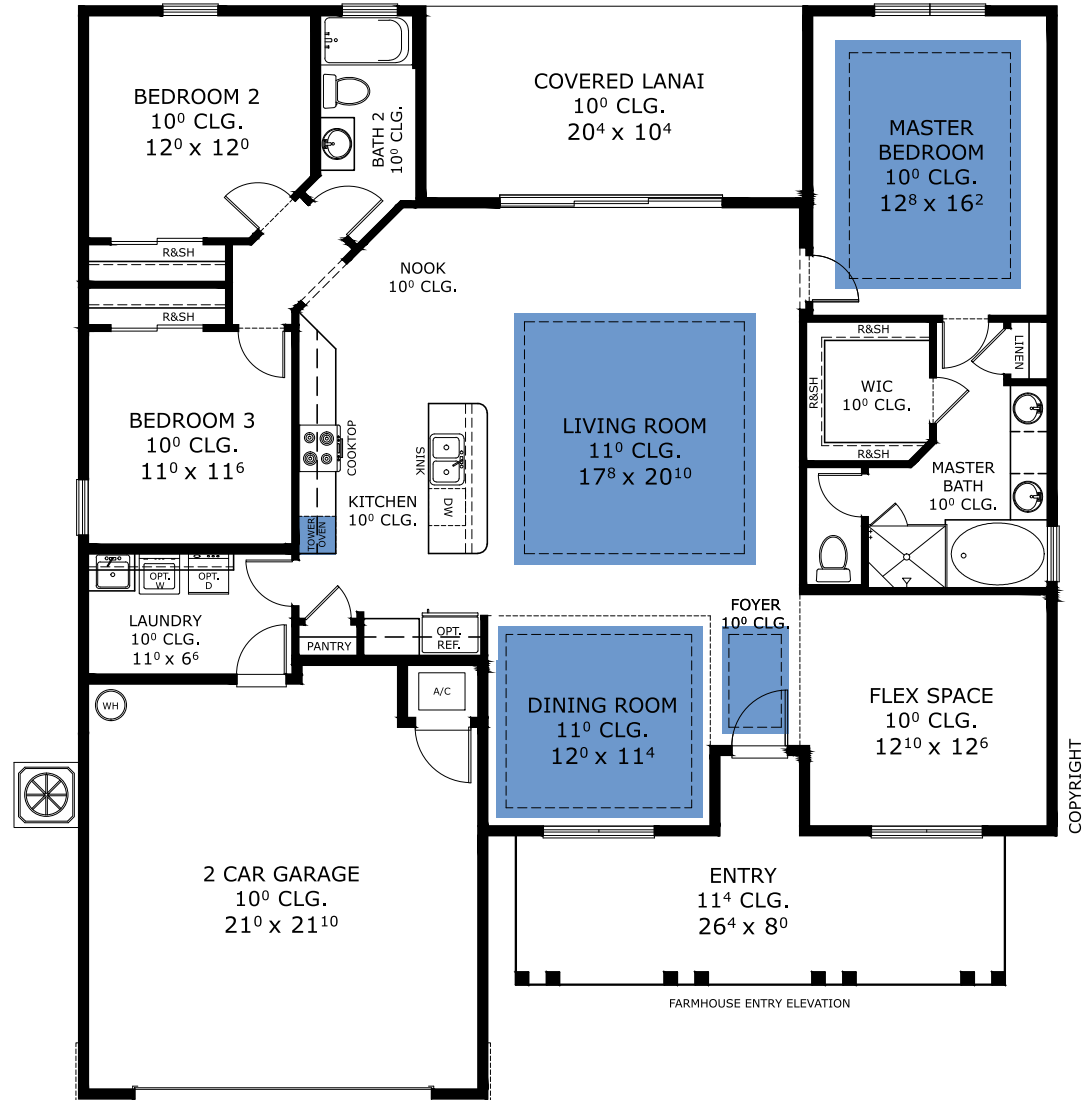
THE FARMHOUSE



THE COASTAL



FIRST FLOOR



FARMHOUSE ENTRY ELEVATION

COPYRIGHT

©1994-2026 ICI Homes™ is a registered trademark whose divisions operate under CBC1267313, CBC1262114, CBC1262120, CBC1264300, CBC1265743, CRC1333091, and CBC1257263. Features may be plan specific and vary. Please consult a Sales Associate for specific feature information. All new ICI Homes come with a HBW 2-10 warranty. Certain elevations may have additional fees. Prices may not include lot premiums, upgrades, and options. Inventory home completion date may vary. All prices subject to change without notice. All plans are property of ICI Homes and cannot be copied or used without permission. Prices, promotions, incentives, features, options, amenities, floor plans, elevations, site maps, designs, materials, and dimensions are for illustrative purposes only and subject to change without notice. Plans should not be relied upon as representation express or implied of final sizes, locations, features or dimensions. Square footage and dimensions are estimated and may vary from description. All HERS ratings and savings are calculated by a third party energy rating service. Actual savings will depend on a number of factors, including but not limited to daily activities, home maintenance practices, household size, use of appliances, lighting and internal climate control systems, lot orientation, and surrounding climate and weather conditions. Created on 05/15/2026: _____ Garage Orientation R / L: _____

