



Juanita McClellan



## THE SERENA II at VOLUSIA/FLAGLER OFFSITE

THE SERENA II - MEDITERRANEAN

**3 Bedrooms • 2.5 Bathrooms • 3-Car Garage • 2,259 ft<sup>2</sup> Living Area • 3,037 ft<sup>2</sup> Under Roof**

The Serena II floor plan, spanning 2,256 square feet, offers an open layout for comfortable living and entertaining. The heart of the home is an airy living room, dining area, and deluxe kitchen that opens to a covered lanai, ideal for Florida's indoor-outdoor lifestyle. The private master suite features a spa-like bath and expansive walk-in closet, creating a serene retreat. Two additional bedrooms share a bath near a versatile flex room. With ICI Homes' renowned customization, you can transform the Serena II to suit your family's unique needs, from layout tweaks to outdoor enhancements.

**Juanita McClellan**

United Real Estate Gallery - 10920

nitamcclellan@comcast.net

\* Renderings may vary from actual home. Please see disclaimer for more details.

# THE SERENA II

3 Bedrooms • 2.5 Bathrooms • 3-Car Garage

Volusia/Flagler

Offsite  
Ormond Beach, FL

Available In  
Volusia Flagler On Your Lot

Living Area: 2,259 ft<sup>2</sup> Under Roof: 3,037 ft<sup>2</sup>

## THE MEDITERRANEAN III



## THE TUSCAN III



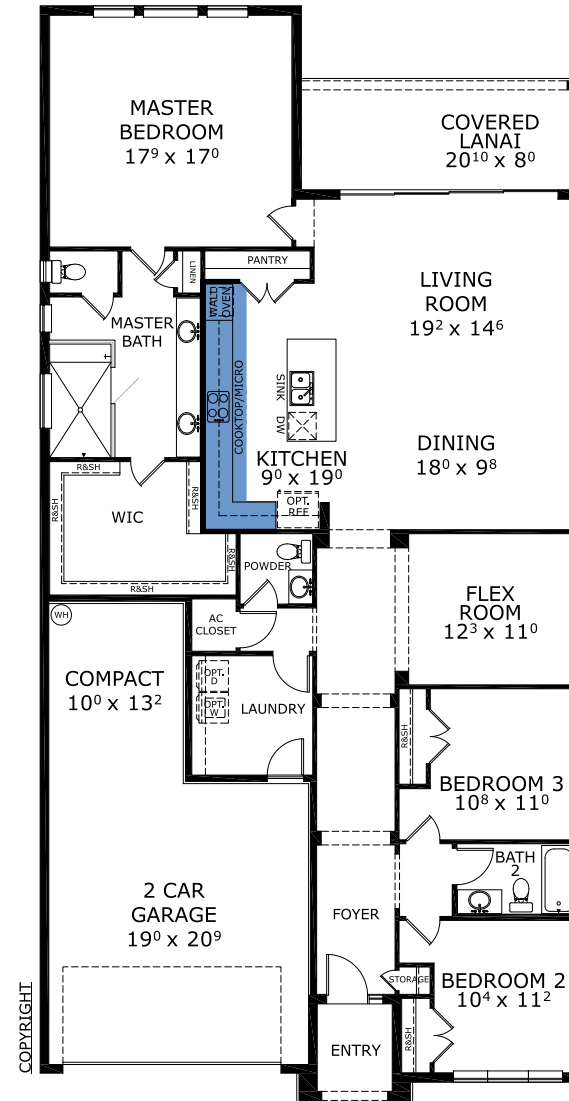
## THE WEST INDIES



## THE PALM CREST



## FIRST FLOOR



COPYRIGHT

©1994-2026 ICI Homes™ is a registered trademark whose divisions operate under CBC1267313, CBC1262114, CBC1262120, CBC1264300, CBC1265743, CRC1333091, and CBC1257263. Features may be plan specific and vary. Please consult a Sales Associate for specific feature information. All new ICI Homes come with a HBW 2-10 warranty. Certain elevations may have additional fees. Prices may not include lot premiums, upgrades, and options. Inventory home completion date may vary. All prices subject to change without notice. All plans are property of ICI Homes and cannot be copied or used without permission. Prices, promotions, incentives, features, options, amenities, floor plans, elevations, site maps, designs, materials, and dimensions are for illustrative purposes only and subject to change without notice. Plans should not be relied upon as representation express or implied of final sizes, locations, features or dimensions. Square footage and dimensions are estimated and may vary from description. All HERS ratings and savings are calculated by a third party energy rating service. Actual savings will depend on a number of factors, including but not limited to daily activities, home maintenance practices, household size, use of appliances, lighting and internal climate control systems, lot orientation, and surrounding climate and weather conditions. Created on 05/15/2026: \_\_\_\_\_ Garage Orientation R / L: \_\_\_\_\_

