



Juanita McClellan



## THE MARABELLA at OAKMONT

THE MARABELLA - COASTAL

**4 Bedrooms • 3.5 Bathrooms • 3-Car Garage • 3,150 ft<sup>2</sup> Living Area • 3,921 ft<sup>2</sup> Under Roof**

The Marabella floor plan is designed to balance luxury and comfort with 4 bedrooms, 3.5 baths, and open-concept living areas perfect for gatherings. The master suite serves as a private retreat, complete with a spacious bath, dual vanities, and walk-in closet. A deluxe kitchen with a central island opens to the living room, ideal for entertaining or quiet evenings at home. The upstairs features a game room and three additional bedrooms, while the outdoor covered lanai extends your living space. ICI Homes' custom options make it easy to tailor Marabella to suit your lifestyle perfectly.

**Juanita McClellan**  
United Real Estate Gallery - 10920  
nitamcclellan@comcast.net

\* Renderings may vary from actual home. Please see disclaimer for more details.

# THE MARABELLA

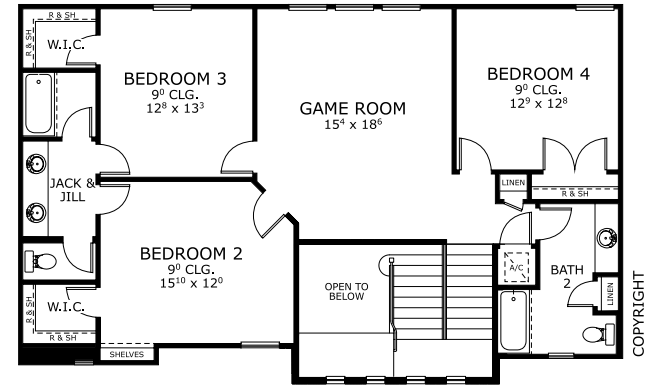
4 Bedrooms • 3.5 Bathrooms • 3-Car Garage

**Oakmont** Available In  
Gainesville, FL Oakmont 80

Living Area: 3,150 ft<sup>2</sup> Under Roof: 3,921 ft<sup>2</sup>



## FIRST-SECOND FLOOR



©1994-2026 ICI Homes™ is a registered trademark whose divisions operate under CBC1267313, CBC1262114, CBC1262120, CBC1264300, CBC1265743, CRC1333091, and CBC1257263. Features may be plan specific and vary. Please consult a Sales Associate for specific feature information. All new ICI Homes come with a HBW 2-10 warranty. Certain elevations may have additional fees. Prices may not include lot premiums, upgrades, and options. Inventory home completion date may vary. All prices subject to change without notice. All plans are property of ICI Homes and cannot be copied or used without permission. Prices, promotions, incentives, features, options, amenities, floor plans, elevations, site maps, designs, materials, and dimensions are for illustrative purposes only and subject to change without notice. Plans should not be relied upon as representation express or implied of final sizes, locations, features or dimensions. Square footage and dimensions are estimated and may vary from description. All HERS ratings and savings are calculated by a third party energy rating service. Actual savings will depend on a number of factors, including but not limited to daily activities, home maintenance practices, household size, use of appliances, lighting and internal climate control systems, lot orientation, and surrounding climate and weather conditions. Created on 05/15/2026: \_\_\_\_\_ Garage Orientation R / L: \_\_\_\_\_

