



Juanita McClellan

THE FLEMING - F at NOCATEE

THE WEST INDIES

4 Bedrooms • 3.5 Bathrooms • 2-Car Garage • 1,966 ft² Living Area • 2,499 ft² Under Roof

The Fleming is a 1,966-square-foot, four-bedroom, three-and-a-half-bath home designed for comfort and style. The main floor features a two-story living room, open kitchen, dining area, and a luxurious master suite with a walk-in closet and en-suite bath. Upstairs, three bedrooms, two full baths, and a game room provide flexible space for family and guests. A covered lanai off the kitchen offers a perfect spot for outdoor relaxation. With ICI Homes' customization options, you can personalize this floor plan to suit your unique lifestyle, making it truly feel like home.

Juanita McClellan
United Real Estate Gallery - 10920
nitamcclellan@comcast.net

* Renderings may vary from actual home. Please see disclaimer for more details.

THE FLEMING - F

4 Bedrooms • 3.5 Bathrooms • 2-Car Garage

Nocatee

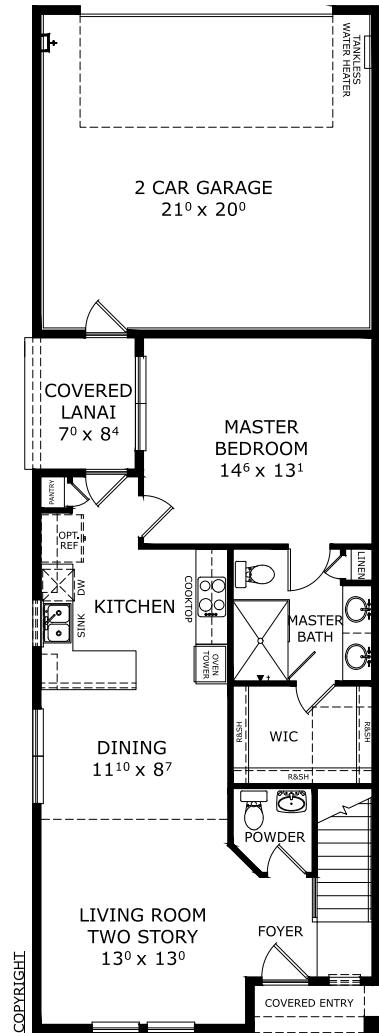
Ponte Vedra, FL

Available In

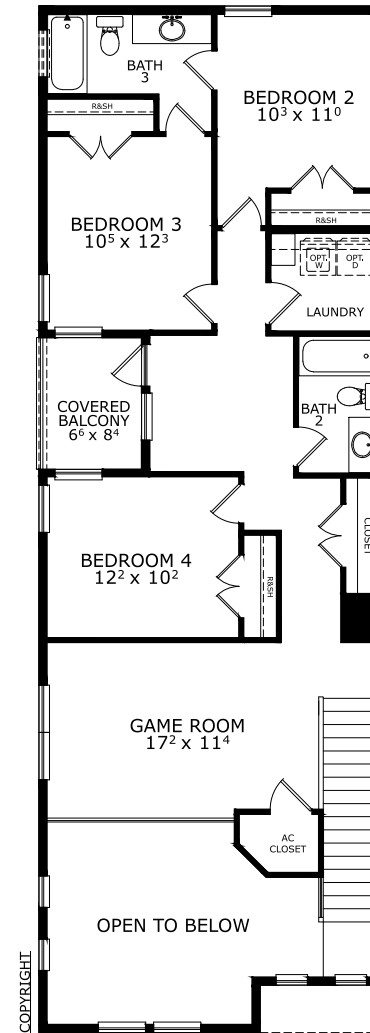
West End Townhomes

Living Area: 1,966 ft² **Under Roof:** 2,499 ft²

THE FARMHOUSE



FIRST-SECOND FLOOR



©1994-2026 ICI Homes™ is a registered trademark whose divisions operate under CBC1267313, CBC1262114, CBC1262120, CBC1264300, CBC1265743, CRC1333091, and CBC1257263. Features may be plan specific and vary. Please consult a Sales Associate for specific feature information. All new ICI Homes come with a HBW 2-10 warranty. Certain elevations may have additional fees. Prices may not include lot premiums, upgrades, and options. Inventory home completion date may vary. All prices subject to change without notice. All plans are property of ICI Homes and cannot be copied or used without permission. Prices, promotions, incentives, features, options, amenities, floor plans, elevations, site maps, designs, materials, and dimensions are for illustrative purposes only and subject to change without notice. Plans should not be relied upon as representation express or implied of final sizes, locations, features or dimensions. Square footage and dimensions are estimated and may vary from description. All HERS ratings and savings are calculated by a third party energy rating service. Actual savings will depend on a number of factors, including but not limited to daily activities, home maintenance practices, household size, use of appliances, lighting and internal climate control systems, lot orientation, and surrounding climate and weather conditions. Created on 05/15/2026: _____ Garage Orientation R / L: _____

