



Juanita McClellan



**THE CASTILLO - C at NOCATEE**

**THE CASTILLO - FARMHOUSE**

**3 Bedrooms • 2.5 Bathrooms • 2-Car Garage • 1,680 ft<sup>2</sup> Living Area • 2,306 ft<sup>2</sup> Under Roof**

The Castillo is a stylish two-story townhome featuring 3 bedrooms, 2.5 baths, and a two-car garage within its 1,680 square feet. The open-concept main floor combines a modern kitchen, dining, and living area, ideal for both entertaining and daily comfort. Upstairs, the private master suite includes a balcony, walk-in closet, and dual-vanity bath. Two additional bedrooms share a full bath, and a central laundry room adds convenience. With quality craftsmanship and options for customization, the Castillo offers a blend of style, practicality, and comfort designed for modern living.

**Juanita McClellan**  
United Real Estate Gallery - 10920  
nitamcclellan@comcast.net

\* Renderings may vary from actual home. Please see disclaimer for more details.

# THE CASTILLO - C

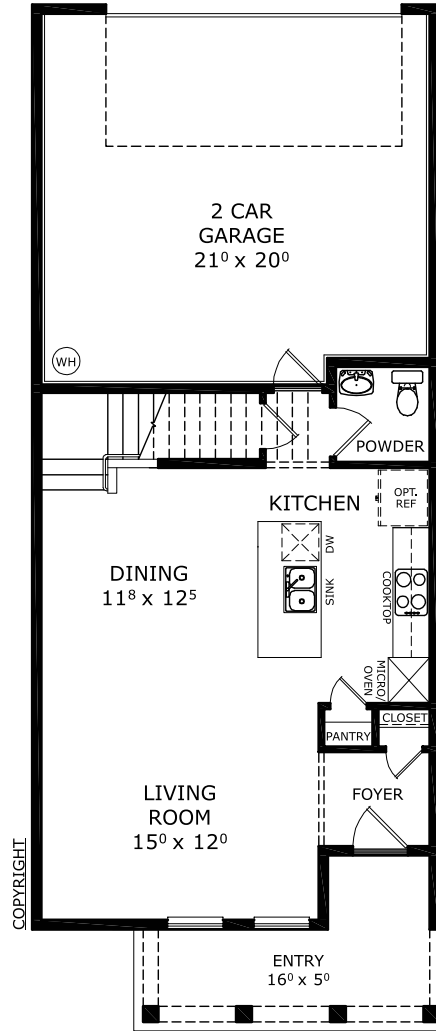
3 Bedrooms • 2.5 Bathrooms • 2-Car Garage

**Nocatee**  
Ponte Vedra, FL

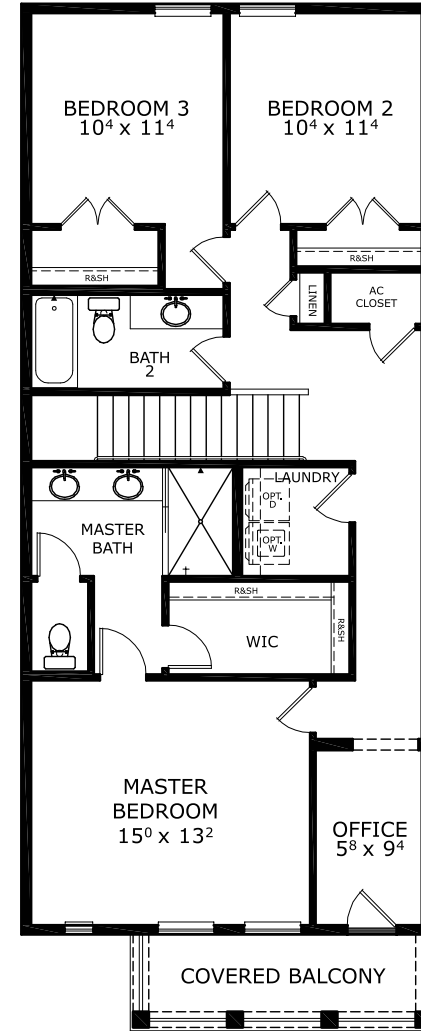
**Available In**  
West End Townhomes

**Living Area:** 1,680 ft<sup>2</sup> **Under Roof:** 2,306 ft<sup>2</sup>

## THE WEST INDIES



## FIRST-SECOND FLOOR



©1994-2026 ICI Homes™ is a registered trademark whose divisions operate under CBC1267313, CBC1262114, CBC1262120, CBC1264300, CBC1265743, CRC1333091, and CBC1257263. Features may be plan specific and vary. Please consult a Sales Associate for specific feature information. All new ICI Homes come with a HBW 2-10 warranty. Certain elevations may have additional fees. Prices may not include lot premiums, upgrades, and options. Inventory home completion date may vary. All prices subject to change without notice. All plans are property of ICI Homes and cannot be copied or used without permission. Prices, promotions, incentives, features, options, amenities, floor plans, elevations, site maps, designs, materials, and dimensions are for illustrative purposes only and subject to change without notice. Plans should not be relied upon as representation express or implied of final sizes, locations, features or dimensions. Square footage and dimensions are estimated and may vary from description. All HERS ratings and savings are calculated by a third party energy rating service. Actual savings will depend on a number of factors, including but not limited to daily activities, home maintenance practices, household size, use of appliances, lighting and internal climate control systems, lot orientation, and surrounding climate and weather conditions. Created on 05/15/2026: \_\_\_\_\_ Garage Orientation R / L: \_\_\_\_\_

